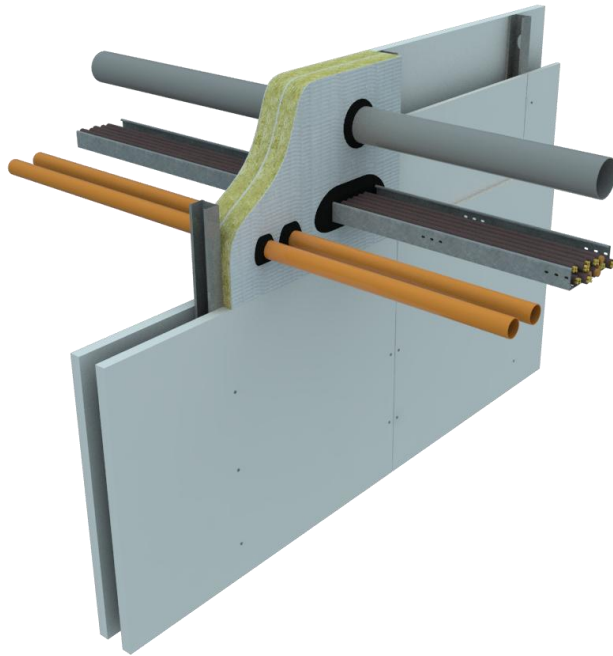


PFC Corofil High Expansion Intumescent Sealant



Application

PFC Corofil High Expansion (HE) Intumescent Sealant is an acrylic based sealant containing graphite, used to seal around single or multiple services to reinstate the fire performance of concrete floors and flexible or rigid walls for up to 4 hours.

Suitable for the following applications;

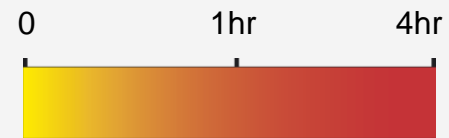
- Coated Panel System (apertures up to 1100mm x 750mm)
- Plastic and non combustible pipes (including some insulated pipes)
- Multi layer composite pipes
- Cables (single cables or bunches including telecommunication)
- Cable trays and ladders
- Large service openings (up to 300mm x 100mm)
- Suitable for masonry / plasterboard walls and concrete floors
- 3rd Party Certificated

Pipes tested

PVC, PE, PP, ABS, PEX/MLC, Copper, Steel

FIRE RATINGS

Tested to EN1366-3:2009
EN1366-4:2009
Classification EN13501-2:2009



Fire Rating

TECHNICAL INFORMATION

Available from our technical sales office.

Email tech@pfc-corofil.com for:

- Safety Data Sheet (SDHEIS)
- Installation Instructions (MSHEIS)
- Product Certification



P12 48
P12 338
P12 395
P31 40
P31 710



PFC Corofil High Expansion Intumescent Sealant

Fire Rating Tables

Flexible & Rigid Wall Constructions (Minimum Wall Thickness 120mm)

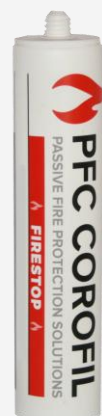
Penetration Specification	Wall Thickness mm	HE Sealant Installed Both Faces	Backing Material	Classification
PVC Pipe 40mm diameter	1.9 - 3.0	10mm annular gap x 25mm deep	Not Required	EI120 U/C
PVC Pipe 125mm diameter	4.8 - 7.4	16mm annular gap x 25mm deep	30mm deep C144	EI120 U/C
HDPE Pipe 63mm diameter & cables up to 21mm	7.2	300mm wide x 100mm high x 25mm deep	Not Required	EI120 U/C
HDPE Pipe 90mm diameter	9.2	12.5mm annular gap x 25mm deep	Not Required	EI120 U/C
ABS Pipe 90mm diameter	6.0	12.5mm annular gap x 25mm deep	Not Required	EI120 U/C
Copper/Steel Pipe 60mm with 32mm 'Armaflex' (CS) Continued Sustained	0.8 - 4.2	20mm annular gap x 25mm deep	Not Required	E 120 U/C EI90 U/C
Copper/Steel Pipe 15mm diameter with 13mm 'Armaflex' (CS) Continued Sustained	0.8 - 7.0	15mm annular gap x 25mm deep	Not Required	EI120 U/C
Cables up to 21mm	N/A	300mm wide x 100mm high x 25mm deep	Not Required	EI120

ORDERING

Please order from our technical sales office.

PFC Corofil
Units 3-4
King George Trading Estate
Davis Road, Chessington
Surrey KT9 1TT

Tel: + 44 (0) 208 391 0533
Fax: + 44 (0) 208 391 2723
Email: sales@pfc-corofil.com
www.pfc-corofil.com



PFC Corofil High Expansion Intumescent Sealant

Double Layer 50mm PFC Corofil Coated Panel (Maximum Aperture 600mm x 600mm) in Flexible or Rigid Wall (Minimum 100mm Thick)

Penetration Specification	Wall Thickness mm	HE Sealant Installed Both Faces	Backing Material	Classification
Copper/Steel Pipe 40mm diameter with 20mm thick foil faced glass wool insulation min 80kg/m3 density. (CS) Continued Sustained	1.5 – 14.2			EI60 C/U
Copper/Steel Pipe 159mm diameter with 30mm thick foil faced glass wool insulation min 80kg/m3 density. (CS) Continuous Sustained	2.3 – 14.2	15mm annular gap x 15mm deep incorporating a 15mm fillet projecting from the face of the seal		E 90 C/U EI60 C/U
Steel Pipe 40mm diameter with 20mm thick foil faced glass wool insulation min 80kg/m3 density. (CS) Continued Sustained	1.7 – 14.2			
Steel Pipe 150mm diameter with 30mm thick foil faced glass wool insulation min 80kg/m3 density. (CS) Continued Sustained	2.3 – 14.2			EI60 C/U

PFC Corofil
Units 3-4
King George Trading Estate
Davis Road
Chessington
Surrey KT9 1TT

Tel: + 44 (0) 208 391 0533
Fax: + 44 (0) 208 391 2723
Email: sales@pfc-corofil.com
tech@pfc-corofil.com
Website www.pfc-corofil.com

NOTES

Supporting Constructions

Rigid Floor Constructions must be a minimum of 150mm thick. Masonry/Concrete floors shall have a minimum density for concrete or brick of 780 kg/m3. Aerated Concrete blocks shall be a minimum of 650 kg/m3. All floors shall have at least the same fire resistance as that required of the sealing system.

Rigid Wall Constructions must be a minimum of 100mm thick. Masonry/Concrete walls shall have a minimum density for concrete or brick 780 kg/m3. Aerated concrete blocks shall be a minimum of 600 kg/m3. All walls shall have at least the same fire resistance as that required of the sealing system.

Flexible Wall Constructions must be a minimum 100mm thick and comprise of a minimum of 2 layers of 'type F' Gypsum board on both faces with minimum 50mm studs.

PFC Corofil High Expansion Intumescent Sealant

Single Layer of 50mm PFC Corofil Coated Panel (Maximum Aperture 1100mm x 750mm) in Rigid Wall Construction (Minimum 150mm Thick)

Penetration Specification	Wall Thickness mm	HE Sealant Installed Both Faces	Backing Material	Classification
PVC Pipe 50mm – 125mm	2.4 - 7.4	20mm annular gap x 50mm deep (Full Depth of Panel)	Not Required	EI45 U/C
PEX/MLC (Multi Layer Composite) 40mm	4.0			
PEX/MLC 50mm	4.5			
PEX/MLC 63mm	6.0	20mm annular gap x 50mm deep (Full Depth of Panel)	Not Required	E 45 U/C EI30 U/C
PEX/MLC 75mm	7.5			
PEX/MLC 90mm	8.5			
PEX/MLC 110mm	10.0			
*500mm Perforated Cable Tray				EI30
* Electrical Cables up to 21mm diameter				
*1no. C1 Cable	N/A	20mm gap x 50mm deep (Full Depth of Panel)	Not Required	EI45
*1no. C2 Cable				
*1no. C3 Cable				

PFC Corofil
Units 3-4
King George Trading Estate
Davis Road
Chessington
Surrey KT9 1TT

Tel: + 44 (0) 208 391 0533
Fax: + 44 (0) 208 391 2723
Email: sales@pfc-corofil.com
tech@pfc-corofil.com
Website www.pfc-corofil.com

NOTES

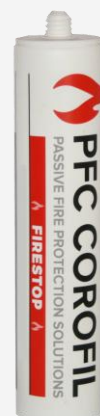
Service Support Requirements

Services should be rigidly supported via steel angle, hangers or channels, not further than 400mm from the surface of the sealing system on both faces of the wall and top side of the floor unless specified otherwise in the performance data.

All cables coated with 2mm DFT PFC Corofil Ablative Coating 300mm along the cables both sides of the seal.



This data sheet shows the only applications the product has been tested in. Please ensure the product has been tested in, and is suitable for your application (see PFC Corofil terms and conditions 13.1.1).



PFC Corofil High Expansion Intumescent Sealant

Double Layer 50mm PFC Corofil Coated Panel (Maximum Aperture 1100mm x 750mm) in Rigid Wall Construction (Minimum 150mm Thick)				
Penetration Specification	Wall Thickness mm	HE Sealant Installed Both Faces	Backing Material	Classification
PVC Pipe 50mm-125mm	2.4 - 7.4	20mm annular gap x 25mm deep	Not Required	EI120 U/C
PEX/MLC (Multi Layer Composite) 40mm	4.0	20mm annular gap x 25mm deep	Not Required	EI120 U/C
PEX/MLC 50mm	4.5			
PEX/MLC 63mm	6.0			
PEX/MLC 75mm	7.5			
PEX/MLC 90mm	8.5			
PEX/MLC 110mm	10.0			
*500mm Perforated Cable Tray				
*Electrical Cables up to 21mm diameter				EI120
*1no. C1 Cable	N/A	20mm gap x 25mm deep	Not Required	
*1no. C2 Cable				E 120 EI90
*1no. C3 Cable				EI120

PFC Corofil
Units 3-4
King George Trading Estate
Davis Road
Chessington
Surrey KT9 1TT

Tel: + 44 (0) 208 391 0533
Fax: + 44 (0) 208 391 2723
Email: sales@pfc-corofil.com
tech@pfc-corofil.com
Website www.pfc-corofil.com

NOTES

Terminology

Fire performance in accordance with EN1366-3, EN1366-4, Classification EN13501-2:2009 + A1:2009, ETAG-026, Air permeability EN1026, Sound EN10140. Fire resistance classes are; E = Integrity, the product can withstand the fire from the non fire side in minutes, I = Insulation, the product can withstand the temperature travelling down the service in minutes.
U/U = Uncapped inside and outside the furnace.
U/C = Uncapped inside the furnace and capped outside.
C/U = Capped inside the furnace and uncapped outside.

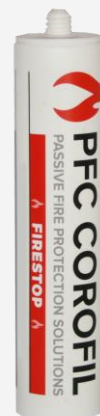
*All cables coated with 2mm DFT PFC Corofil Ablative Coating 300mm along the cables both sides of the seal.

PFC Corofil High Expansion Intumescent Sealant

Rigid Floor Construction (Minimum 150mm Thick)				
Penetration Specification	Wall Thickness mm	HE Sealant Installed Both Faces	Backing Material	Classification
PP Pipe 50mm diameter	2.1			EI240 U/C
PP Pipe 110mm diameter	10.7			EI120 U/C
PP Pipe 110mm diameter	3.7			EI30 U/C
PE Pipe 40mm diameter	4.1			EI240 U/C
PE Pipe 125mm diameter	11.4	20mm annular gap x 25mm deep		EI90 U/C
PE Pipe 125mm diameter	7.6			EI60 U/C
PVC Pipe 40mm diameter	2.0		100mm deep C144 strip	EI240 U/C
PVC Pipe 114mm diameter	8.1			EI120 U/C
PVC Pipe 114mm diameter	3.6			E 90 U/C EI45 U/C
Copper/Steel Pipe 41-159mm diameter with 16-32mm 'Armaflex' (CS) Continued Sustained	2.5 - 14.2	20mm gap x 25mm deep		EI120 U/C
Copper/Steel Pipe 41mm diameter with 16mm 'Armaflex' (CS) Continued Sustained	1.4 - 14.2	20mm gap x 25mm deep		E 240 U/C EI60 U/C

PFC Corofil
Units 3-4
King George Trading Estate
Davis Road
Chessington
Surrey KT9 1TT

Tel: + 44 (0) 208 391 0533
Fax: + 44 (0) 208 391 2723
Email: sales@pfc-corofil.com
tech@pfc-corofil.com
Website www.pfc-corofil.com



This data sheet shows the only applications the product has been tested in. Please ensure the product has been tested in, and is suitable for your application (see PFC Corofil terms and conditions 13.1.1).

PFC Corofil High Expansion Intumescent Sealant

Rigid Floor Construction (Minimum 150mm Thick)				
Penetration Specification	Wall Thickness mm	HE Sealant Installed Both Faces	Backing Material	Classification
Electrical Cables 0-21mm diameter	N/A	Max Aperture 200mm x 200mm Min Aperture 50 x 50	100mm deep C144 strip	E180 EI20
Electrical Cables 22-80mm				E 120 EI20
Non Sheathed Electrical Cables 0-24mm				E180 EI15
Telecoms Cables up to 21mm diameter	Bundles of up to 100mm diameter			E180 EI20
3no. PE Pipes; 40mm diameter, 60mm diameter & 125mm diameter. All fitted centrally in the aperture. 60mm pipe filled with electrical cables; 3no. A1, 3no. A2, 3no. A3 & 1B cable	4.1			
	4.0			
	7.6	250mm x 250mm Aperture		E120 U/C EI90 U/C

PFC Corofil
Units 3-4
King George Trading Estate
Davis Road
Chessington
Surrey KT9 1TT

Tel: + 44 (0) 208 391 0533
Fax: + 44 (0) 208 391 2723
Email: sales@pfc-corofil.com
tech@pfc-corofil.com
Website www.pfc-corofil.com



PFC Corofil High Expansion Intumescent Sealant

Double Layer 50mm Thick PFC Corofil Coated Panel (Max Aperture 1100mm x 750mm) in Rigid Floor Construction (Minimum 150mm Thick)

Penetration Specification	Wall Thickness mm	HE Sealant Installed Both Faces	Backing Material	Classification
PVC Pipe 50mm – 125mm diameter	2.4 – 7.4			
PEX/MLC (Multi Layer Composite) 40mm diameter	4.0			
PEX/MLC 50mm diameter	4.5			
PEX/MLC 63mm diameter	6.0			
PEX/MLC 75mm diameter	7.5			
PEX/MLC 90mm diameter	8.5mm	20mm annular gap x 25mm deep	Not Required	EI60 U/C
PEX/MLC 110mm diameter	10.0			
*500mm Perforated Cable Tray				
*Electrical Cables up to 21mm diameter				
*1no. C1 Cable				
*1no. C2 Cable				
*1no. C3 Cable				

PFC Corofil
Units 3-4
King George Trading Estate
Davis Road
Chessington
Surrey KT9 1TT

Tel: + 44 (0) 208 391 0533
Fax: + 44 (0) 208 391 2723
Email: sales@pfc-corofil.com
tech@pfc-corofil.com
Website www.pfc-corofil.com

*All cables coated with 2mm DFT PFC Corofil Ablative Coating 300mm along Both sides of the seal



This data sheet shows the only applications the product has been tested in. Please ensure the product has been tested in, and is suitable for your application (see PFC Corofil terms and conditions 13.1.1).

Doc Reference				TDHEIS-2			
PB	SE	CB	CI	AB			
This Copy				Review Date			
February 2018				February 2020			