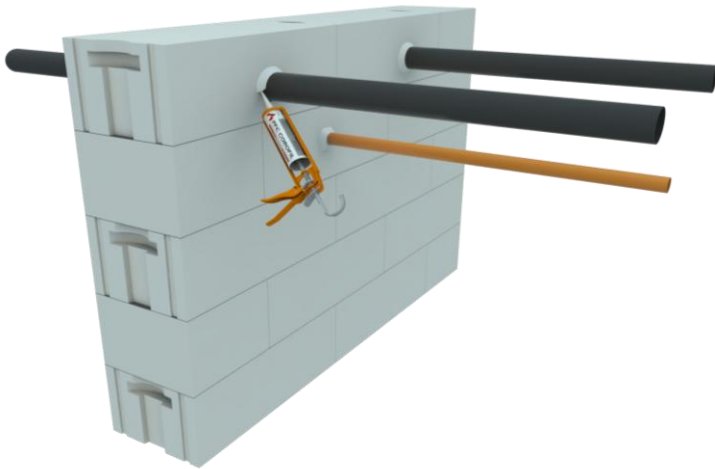


PFC Corofil Acoustic Intumescent Sealant



Application

PFC Corofil Acoustic Intumescent Sealant is designed to be used to seal linear gaps in horizontal and vertical constructions, and to seal small gaps around metal based service penetrations through fire resisting constructions.

General Benefits

- Suitable for linear joints up to 50mm
- Expected shelf life 18 months

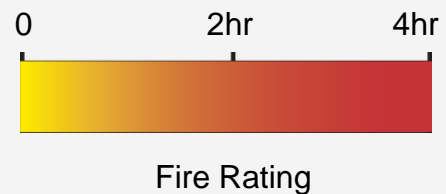
Description

PFC Corofil Acoustic Intumescent Sealant is a one part water based acrylic intumescent.

Where a backing material is required C144 strip should be used to the correct size for the gap to be filled (see TD144S & MSC144 for details).

FIRE RATINGS

Tested to
EN1366-3 & EN1366-4



TECHNICAL INFORMATION

Available from our technical sales office.

Email: tech@pfc-corofil.com for:

- Safety Data Sheet (SDAISE)
- Installation Instructions (MSAISE)
- Product Certification



F30 76/ F30 610 / F30 670
L10 75 / L10 810 / L20 80
L20 820 / P12 338 / P12 395



PFC Corofil Acoustic Intumescent Sealant

Size & Colours

The sealant is available in 310ml cartridges & 600ml foils in white and grey.

Fire Rating Tables

Linear joints in a masonry or concrete wall

Depth of seal (mm)	Backing material	Maximum integrity/insulation relative to the gap width (mm)		
		15	30	50
15	Yes	240/240	240/180	120/120
30	Yes	240/240	240/180	120/120

Sealant is required on both faces of the wall to achieve the insulation rating

Linear joints in a concrete floor slab

Depth of seal (mm)	Backing material	Maximum integrity/insulation relative to the gap width (mm)		
		15	30	50
15	Yes	240/120	240/60	120/60
30	Yes	240/240	240/180	120/120

Linear joints in a wall with timber (minimum density 650kg/m³) forming one long face and masonry or concrete forming the other faces.

Depth of seal (mm)	Backing material	Maximum integrity/insulation relative to the gap width (mm)		
		15	25	50
15	Yes	60/60	30/30	N/A
25	Yes	60/60	60/60	60/60

Linear joints in a wall with timber (density <650kg/m³) forming one long face and masonry or concrete forming the other faces.

Depth of seal (mm)	Backing material	Maximum integrity/insulation relative to the gap width (mm)		
		15	25	50
15	Yes	30/30	30/30	N/A



IFC Certificate Number FS453/05

PFC Corofil Acoustic Intumescent Sealant

Linear joints in a wall with steel forming one long face and masonry or concrete forming the other faces.

Depth of seal (mm)	Backing material	Maximum integrity/insulation relative to the gap width (mm)		
		15	25	50
12	Yes	240/30	120/30	N/A
30	Yes	240/60	120/60	90/60

Single steel pipe or single cable in plasterboard partition and masonry or concrete walls and floors

#Depth of seal (mm)	Maximum diameter/penetration type	Backing material	Maximum integrity/insulation relative to the gap width (mm)	
			15	10
10-25	<60mm steel pipe	Yes	240/30	N/A
10-25	<15mm cable	Yes	N/A	240/30

Maximum rating in plasterboard partition is 120 minutes, or less, depending on the construction used.

Sealant must be applied to both faces of the construction. Minimum 10mm depth must be applied to achieve 30 minutes integrity. 25mm must be applied to achieve 240 minutes

Please order from our technical sales office.

PFC Corofil
Units 3-4
King George Trading Estate
Davis Road
Chessington
Surrey KT9 1TT

Tel: + 44 (0) 208 391 0533
Fax: + 44 (0) 208 391 2723
Email: sales@pfc-corofil.com
www.pfc-corofil.com